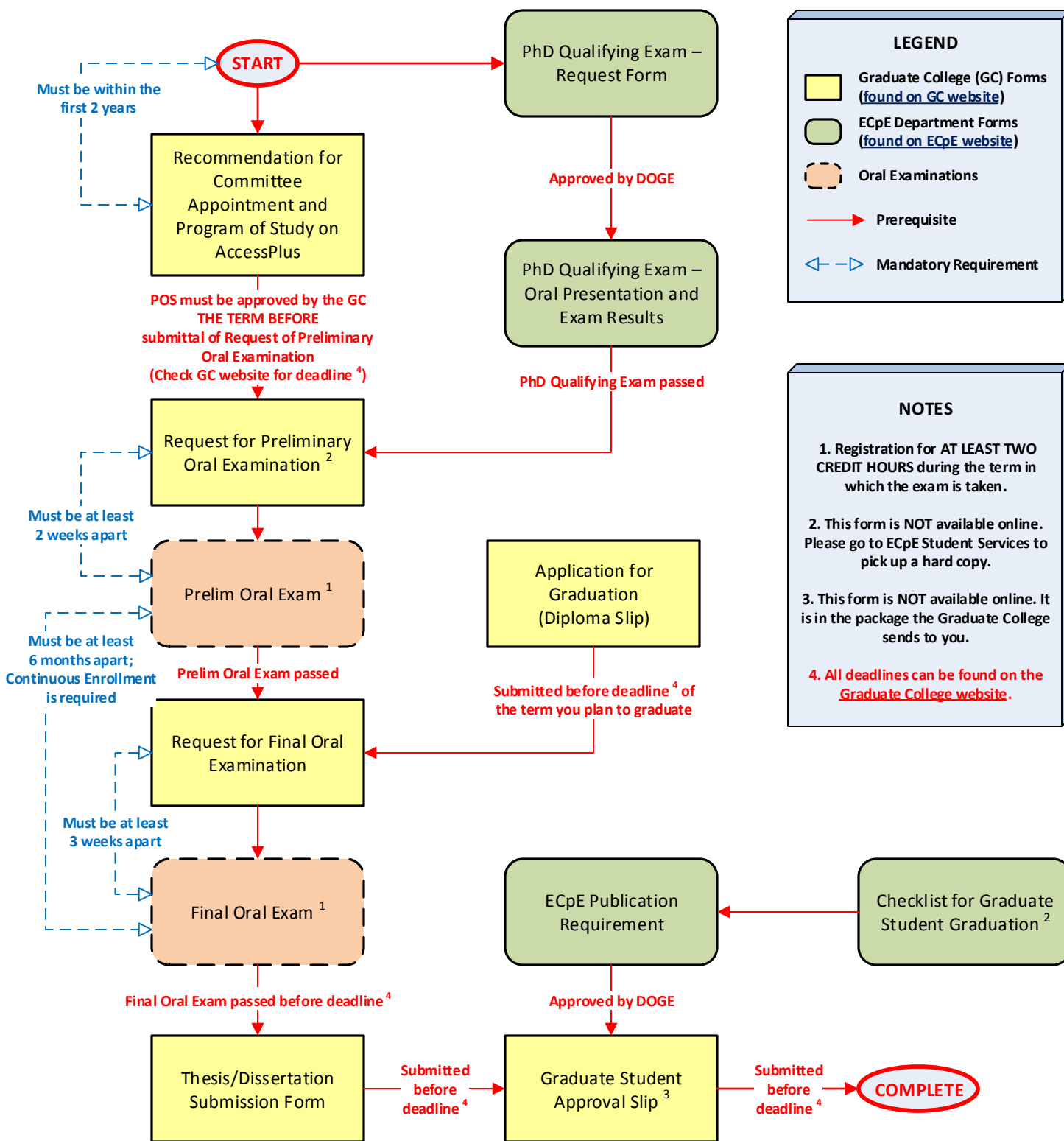


ECpE PhD Flowchart (Last Revised: 01/2016)



COMMENTS

- The PhD Qualifying Process must be completed by the 3rd semester for post MS students, or the 4th semester for post BS students.
- The "outside" member of the POS committee SHALL NOT be in the same academic area as the major professor.
- Time limit for courses on the POS is 7 years. Do not specify an area of specialization on the POS.
- If a co-major or a minor is to be added, it must be requested before the prelim oral exam.
- The student MUST participate in the prelim oral exam on campus.
- At most one person may participate in the final oral exam from a distance. Request must be approved by the Graduate College before the exam.
- ECpE publication requirement for a PhD degree is at least 2 journal or peer-reviewed conference papers published or accepted for publication, as approved by the major professor.
- All PhD students must complete Responsible Conduct of Research (RCR) training before graduation.
- Be sure to upload the final thesis/dissertation online before deadline.⁴